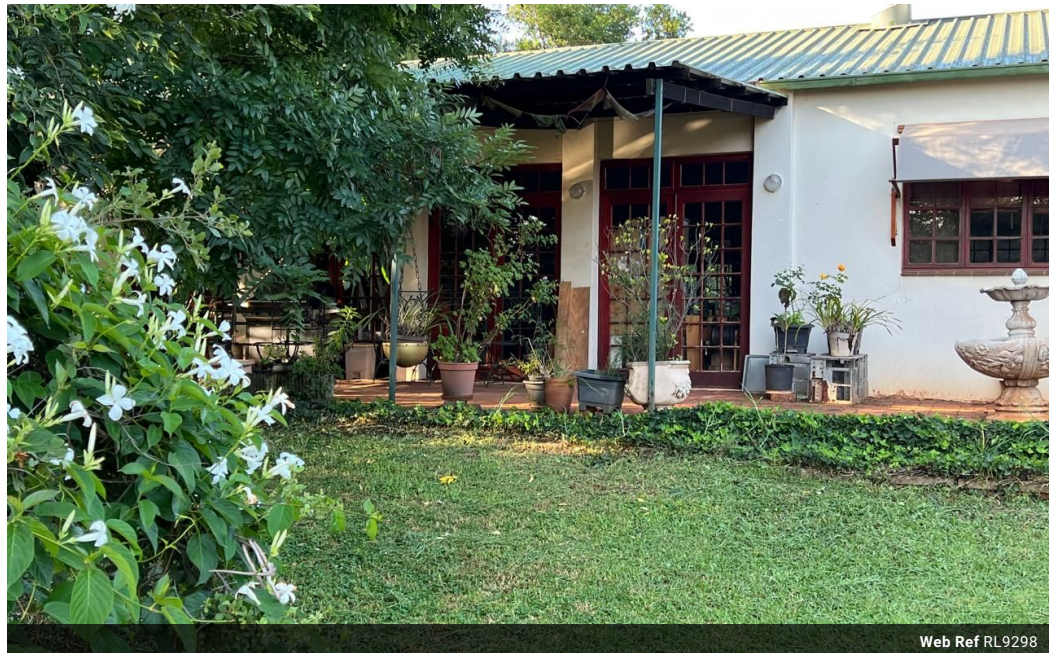




Fleurette Du Rand
0727200556
fleurette@koelet.co.za

Contact Pretoria
082 326 1932

555 Jennings Street
Dasport
Pretoria
0082



Web Ref RL9298



R6,800,000

Monthly Bond Repayment R70,188.81
Calculated over 20 years at 11% with no deposit.

Transfer Costs R611,766.00 **Bond Costs** R70,535.00
These calculations are only a guide. Please ask your conveyancer for exact calculations.

5 4 3

8.56 HA Stunning Multi-Property Farm with Exceptional Amenities

****Stunning Multi-Property Farm with Exceptional Amenities****

This expansive estate offers a unique combination of modern luxury, versatile living spaces, and functional work areas, all set within a beautifully fenced and secure environment. With multiple homes, flats, and workspaces, this property is ideal for a large family, home businesses, or those seeking rental income potential.

****Main House Features:****

- 5 Spacious Bedrooms, including a modern main bedroom ensuite with a walk-in closet.
- 4 Bathrooms, designed for convenience and style.
- 3 Elegant Living Areas perfect for family gatherings or entertaining guests.
- 3 Patios for outdoor relaxation and dining.
- 2 Kitchens, ideal for culinary enthusiasts or large families.
- A dedicated study for work or quiet time.
- Office space with reception area and bathroom, perfect...

Features

Pets Allowed Yes

Interior

Bedrooms	5
Bathrooms	4
Kitchens	1
Recep. Rooms	4
Studies	1
Furnished	No

Exterior

Garages	3
Carports / Parkings	10
Security	Yes
Dom. Accom.	1
Pool	Yes
Views	True

Sizes

Land Size	8Ha
-----------	-----